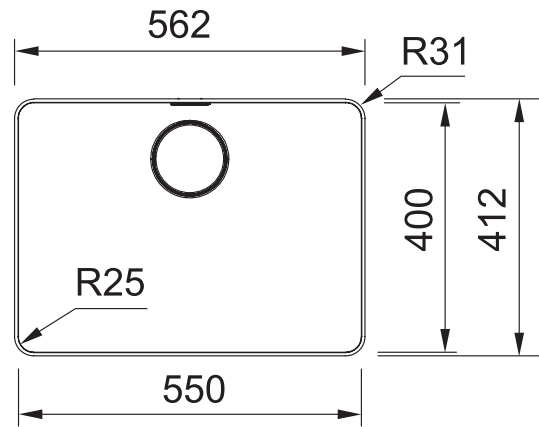


# MYTHOS

MYX210-55B



**NOTE:** May require purchase of an additional waste kit.



## PRODUCT INFORMATION

<b>Installation</b>	Topmount/Flushmount
<b>Dimensions</b>	562 x 412mm
<b>Cabinet Base</b>	800mm
<b>Bowl Size</b>	550 x 400 x 200mm/44L
<b>Bowl Radius</b>	25mm
<b>Cut-Out Size</b>	See Installation Document
<b>Cut-Out Template</b>	No
<b>Waste Outlet</b>	Semi Integrated Waste
<b>Overflow</b>	Yes
<b>Tap Holes</b>	No
<b>Finish</b>	Stainless Steel
<b>Warranty</b>	50 Years

**NOTE:** Cut-out dimensions are a guide only, please use the actual sink as your template.

## FEATURES & BENEFITS



Food Preparation Centre



18/10 Stainless Steel



Push Button Remote Waste



Hidden Overflow



Sound Deadening Pads

## ALL-IN ACCESSORIES (AVAILABLE)

**PACK 1**

- Telescopic Bridge
- Chopping Board
- Small Strainer Bowl
- Small Storage Box
- Bamboo Lid

**PACK 2**

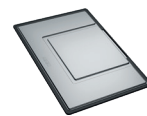
- All Accessories Included In Pack 1
- Silicon Drainer Mat

**PACK 3**

- All Accessories Included In Pack 2
- Large Strainer Bowl
- Storage Container

## ADDITIONAL ACCESSORIES

— Included Accessory  
 - - - Available Accessory



**DT288**  
Extension Drainer



**RM081**  
Rollamat



**CBP082**  
Chopping Board

BARE SINK OPTION AND SOME SINK & TAP PACKAGES DO NOT INCLUDE ACCESSORIES. PLEASE CHAT TO YOUR SALES CONSULTANT FOR FURTHER INFORMATION.

LAST UPDATED: 01 JUNE 2022

