

388L single door freezer, white with 3 full width freezer baskets, 3.5-star energy rating, SpillSafe™ glass shelves, twist & serve icemaker & quick chill function



Product Details

FEATURES

Flat Door Design

Pole Handles

Pigeon pairing capability

Twist Ice & Serve Dispenser

Full-width freezer baskets

Electronic temperature controls

Quick freeze function

Freezer temperature alarm

Multi-flow air delivery system

R600a refrigerant better for the environment

BENEFITS

Understanding new capacity and energy ratings

From the 15th August 2021, the way refrigerators are tested to calculate Energy Star Ratings and energy consumption have changed. This means that the capacity and energy rating calculations have changed, however the product remains unchanged. Be sure to check all new ratings to ensure that your comparisons are consistent with the new standards.

Stylish Design

Crafted with ultra-modern flat doors, elegant handle options and your choice of Dark or Natural Real Stainless Steel or white your fridge will be the centrepiece of your kitchen. (Options vary by model)

Pigeon Pair

Westinghouse's vertical fridges and freezers can be combined in one space to give you a pigeon pair. This provides you with the maximum fresh food and freezer storage in one unit- truly the big fridge for the big family

Twist Ice and Serve Dispenser

Whether its for an afternoon juice or a whisky on the rocks, our easy access twist ice dispenser and tray allows you to just twist and serve ice simply.

Full-width freezer baskets

Easy storage, ultimately reducing the time you need to keep the door open and making life easier when entertaining or preparing for the family.

Specifications

PRODUCT PROFILE

Domestic warranty details (yrs)	2
Additional domestic warranty for the sealed refrigeration system only (yrs)	3
Refrigerator Type	vertical freezer
Exterior door finish	White
Handle design	bar handle
Fridge door opening	left
Cooling system	frost free
Refrigerant	R600a

DIMENSIONS

Total height (mm)	1725
Cabinet height (mm)	1718
Total width (mm)	699
Cabinet width (mm)	693
Total depth (mm)	769
Cabinet depth (mm)	641
Depth door open 90degree (mm)	1360
Freezer Compartment Capacity (L) - AS/NZS 4474.1 2007 (IEC 62552-2015) *	388
Total Capacity (L) - AS/NZS 4474.1 2007 (IEC 62552-2015) *	388
Freezer compartment capacity (gross in litres)	425
Total Gross Capacity (L)	425
Food compartment capacity (net in litres)	386

ENERGY

Energy Star Rating - 3.5
AS/NZS 4474.1 2007 (IEC
62552- 2015) *

Energy Consumption 309
(kWh/year) - AS/NZS
4474.1 2007 (IEC 62552-
2015) *

Energy Star Rating AS/NZS 3.5
4474.2:2009

Energy consumption 380
AS/NZS 4474.2:2009
(kWh/yr)

FREEZER COMPARTMENT

ICE FACILITY

Twist ice and serve 2

BASKET/DRAWER

DIMENSIONS

Total Net Capacity (L) 386

REFRIGERATOR SYSTEM

Controls electronic (without display)

Controls location internal

Controls type touch

Control functions drink chill alarm,quick
freeze function

Door alarm freezer

SHELVING

Shelving glass shelf

Type of shelf spill safe shelf

Number of shelves 4

LIGHTING

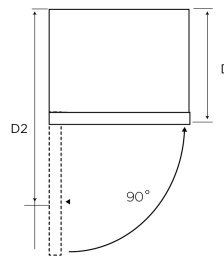
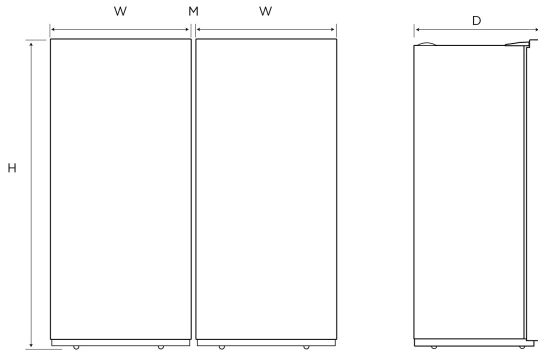
Full width plastic basket 3

Main light LED

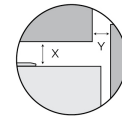
Dimensions

WRB5004SC/WC
WFB4204SC/WC
WRB3504AB/WB

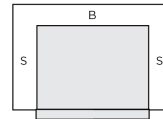
WFB2804AB/WB
WRM2400WF
WFM1700WE



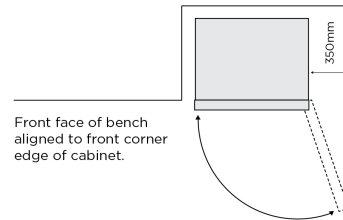
Minimum Recommended Airspaces



If you have a cupboard above the refrigerator with a rear gap of less than 100mm (Y), recommended minimum clearance at the top of the refrigerator increases from 30mm to 70mm (X).



Please note: Doors are designed to sit proud of cabinetry (not flush).



Dimensions	Product Height (H)	Product Width (W)	Product Depth (D)	Product Depth (D2) (Door Open)
WRB5004SC/WC	1725	699	641	1360
WFB4204SC/WC	1725	699	769	1360
WRB3504AB/WB	1720	597	652	1115
WFB2804AB/WB	1720	595	652	1115
WRM2400WF	1434	550	545	1050
WFM1700WE	1434	550	560	1065

Airspace	Side - both (S)	Top	Behind (B)	Middle (M)
WRB5004SC/ WC	30	30	50	21
WFB4204SC/ WC	30	30	50	21
WRB3504AB/ WB	100	100	75	100
WFB2804AB/WB	100	100	75	100
WRM2400WF	30	30	50	30
WFM1700WE	30	30	50	30

IMPORTANT

These dimensions are a guide only. All measurements are in millimetres (mm). For complete installation instructions, refer to the manual provided with product.
© 2023 Electrolux Home Products Pty Ltd. ABN 51 004 762 341. W_DIM_SD_Mar23

Terms and Conditions

IMPORTANT

This is a guide of product dimensions only. For complete installation instructions, refer to the manual provided with product.

PRODUCT INFORMATION

The descriptors and illustrations in this publication apply to the specific products and models described as at the date of issue. Under our policy of continuous product development, product specifications may change without notice. Prospective purchasers should therefore check with their retailer to ensure this publication correctly describes the products that are being offered for sale. All information supplied is to be used for general reference purposes only and is on the understanding that Electrolux Home Products Pty Ltd (Australia) and Electrolux (NZ) Ltd (New Zealand) will not be liable for any loss, liability or damage of whatever kind arising as a result of reliance on such information. Colours of products illustrated are as close as printing limitations allow. Electrolux will at all times comply with its obligations pursuant to law including Trade Practices (Australian Consumer Law) Act and Regulations.

WARRANTY

This warranty only applies to Appliances purchased and used in Australia or New Zealand and used in normal domestic applications and is in addition to (and does not exclude, restrict, or modify in any way) any non-excludable statutory warranties in Australia or New Zealand. All warranties are subject to the conditions set out in the warranty card accompanying the product when purchased.

ELECTROLUX HOME PRODUCTS AUSTRALIA

telephone: 1300 363 640

fax: 1800 350 067

email: customercare@electrolux.com.au

web: www.electrolux.com.au

ELECTROLUX HOME PRODUCTS NEW ZEALAND

telephone: 09 573 2230

fax: 09 573 2221

email: customercare@electrolux.co.nz

web: www.electrolux.co.nz